

# LM-79 Test Report

## Relevant Standards

IES LM-79-2008  
IES TM-30-2015  
CIE 13.3-1995  
IESNA TM-15-11  
CIE 117:1995

## Product SKU

LINAIRE® Flex 3D Bend RGBW  
DI-24V-3D-LIN-RGBW-016

## Test Conditions

Test Temperature: 26.5 °C  
Luminaire Sample Length: 1000 mm.  
Power Supply: Agilent E3634A DC Power Supply  
Voltage: 24.0 VDC  
Current: 0.144 A  
Power Consumption: 3.5 W

## Test Date

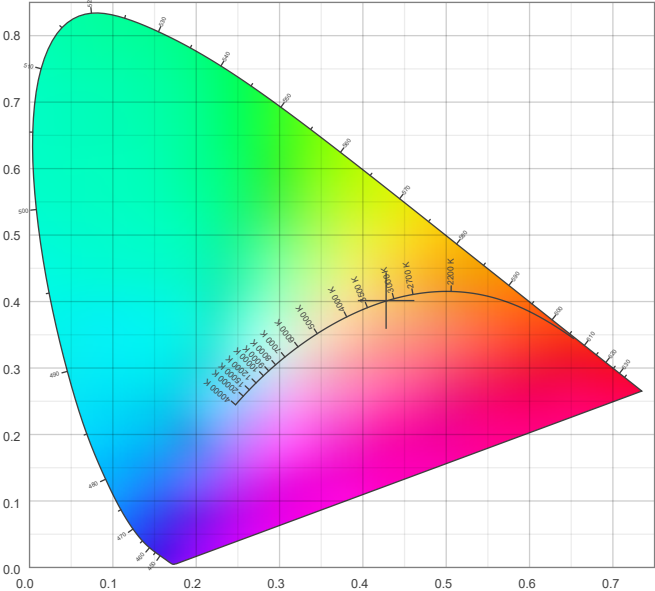
9/18/2025

**Color Details**

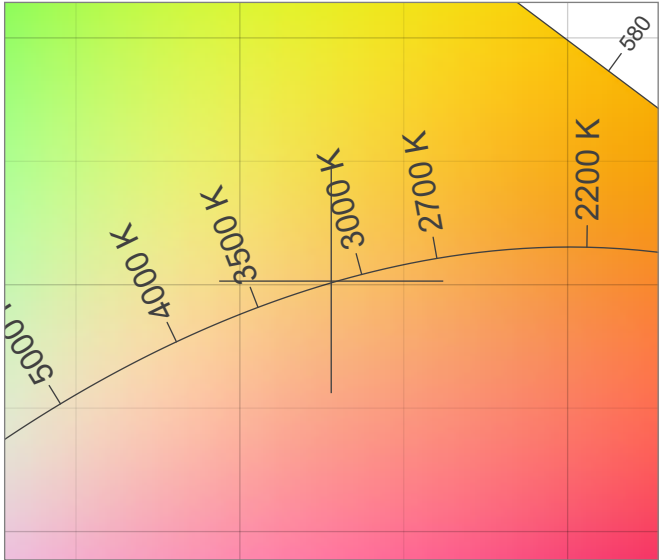
Correlated Color Temperature	CCT =	3141
CIE Test Color Method General Index	CRI =	92.5
CIE Test Color Method Sample Nine Score	R9 =	61.3
IES TM-30-15 Fidelity Index	R <sub>f</sub> =	91.1
IES TM-30-15 Gamut Index	R <sub>g</sub> =	99.1
Luminous Flux	Lm =	192

Color coordinates CIE 1931	(x;y) =	(0.428;0.401)
Color coordinate CIEs 1960	(u;v) =	(0.246;0.346)
Color coordinate CIEs 1976	(u';v') =	(0.246;0.519)
Color deviation from BBL	Duv =	0.0003
Color Quality Scale (CQS)	CQS =	90.7

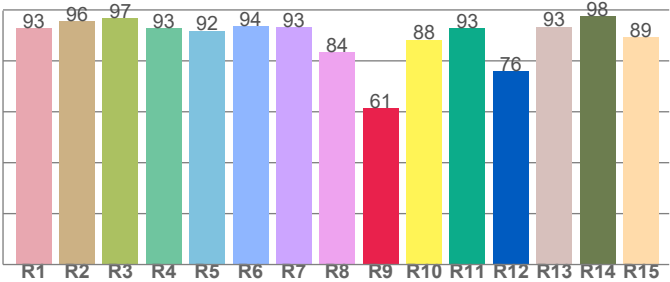
**CIE 1931**



**CIE 1931 – zoomed on Planckian locus**



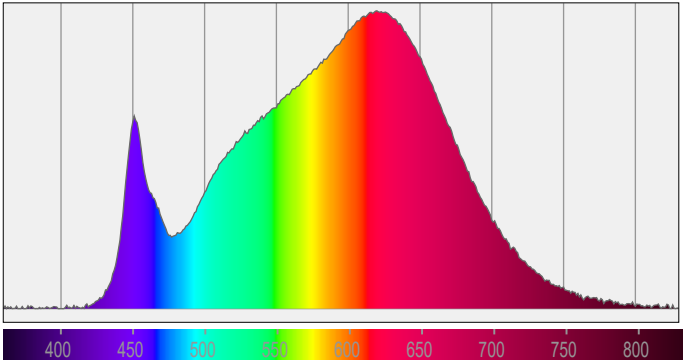
**Color Rendering Index per Reference Color (CIE 1995)**



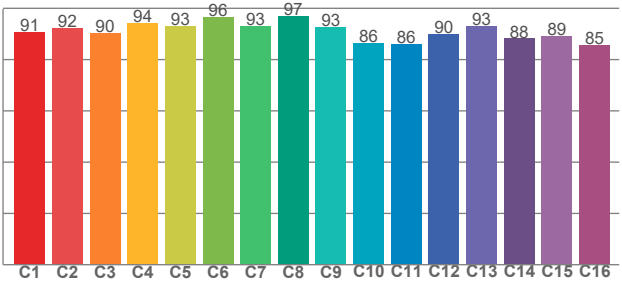
CRI R values, only R1-R8 are used to calculate final CRI value

R1	R2	R3	R4	R5	R6	R7	R8	R9	R10	R11	R12	R13	R14	R15
92.7	95.6	96.8	92.7	91.9	93.8	93.2	83.5	61.3	88.4	92.9	75.9	93.5	97.5	89.2

**Spectral Power Distribution (SPD) / W/nm – 0-100%**



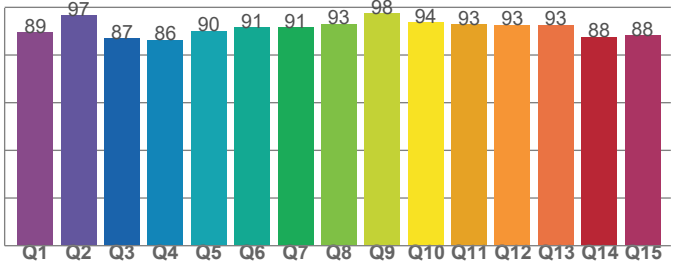
**TM30-18 Rf-Values per Hue Bin**



TM30 C values, 16 binned values out of total of 99 C values

C1	C2	C3	C4	C5	C6	C7	C8	C9	C10	C11	C12	C13	C14	C15	C16
90.7	92.3	90.1	94.2	92.8	96.4	93.0	96.9	92.6	86.5	86.0	89.9	93.0	88.1	89.3	85.5

**Color Quality Scale by Reference Color**



CQS Q values

Q1	Q2	Q3	Q4	Q5	Q6	Q7	Q8	Q9	Q10	Q11	Q12	Q13	Q14	Q15
89.5	96.6	86.9	86.3	90.1	91.5	91.5	93.0	97.5	93.6	92.8	92.7	92.6	87.6	88.3

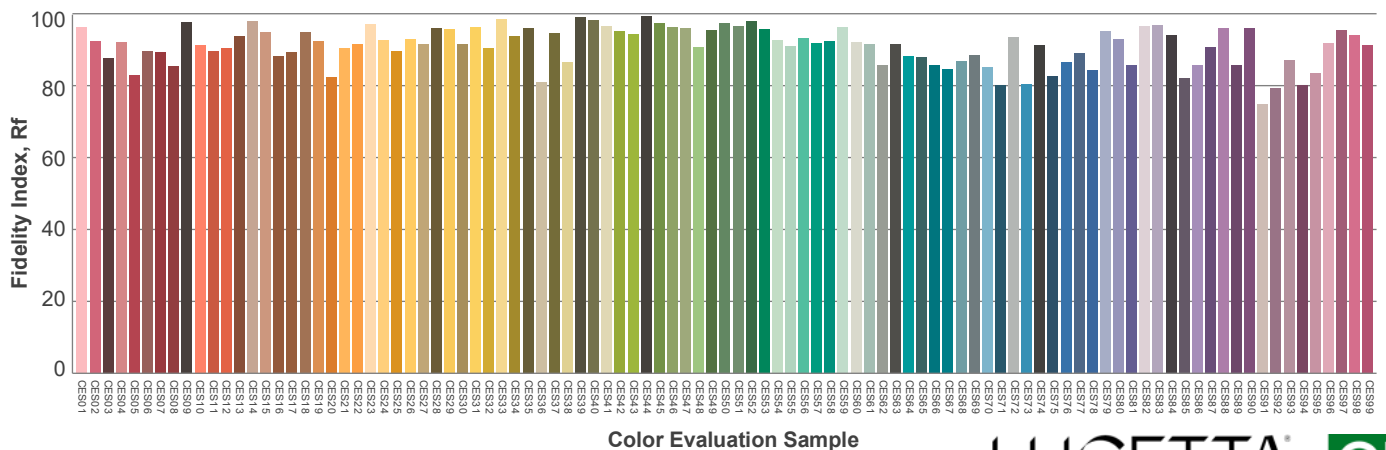
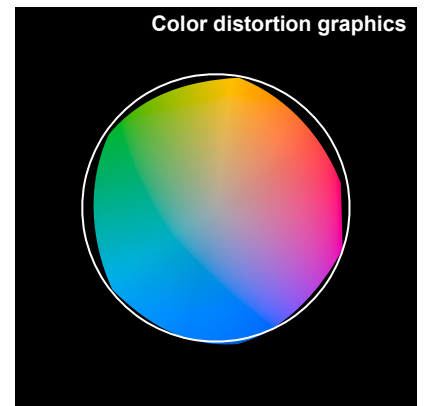
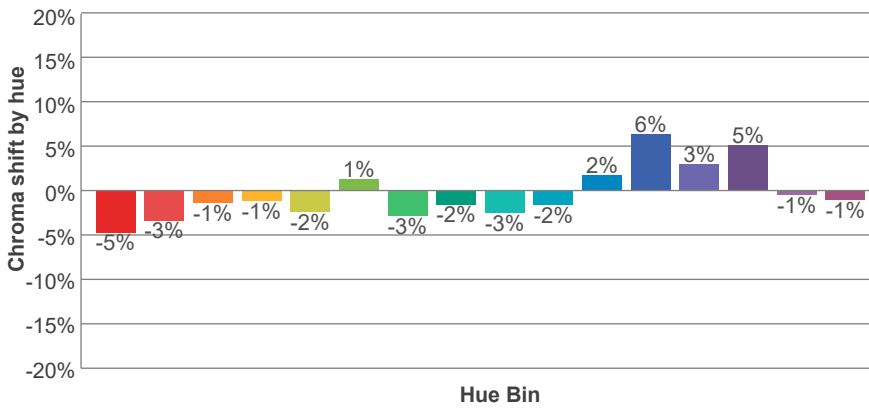
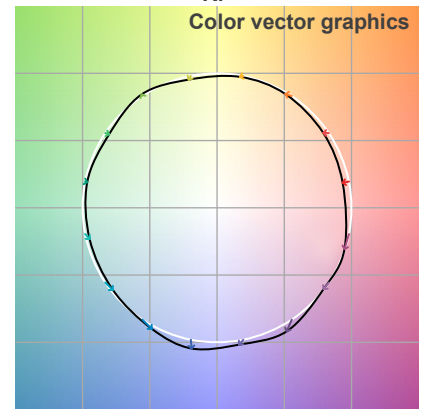
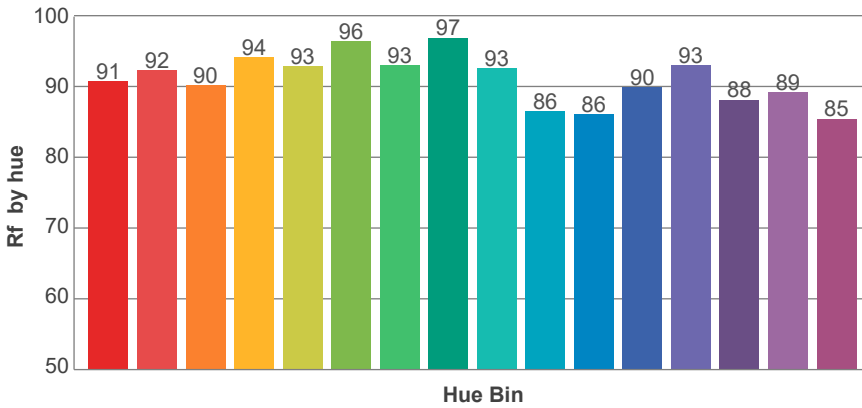
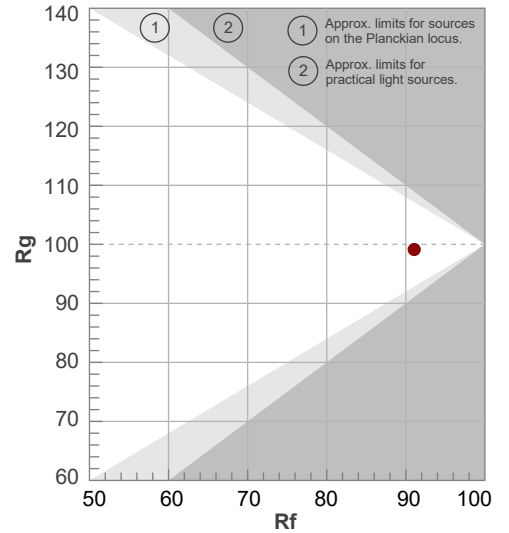


Copyright ©2024 Elemental LED, Inc All rights reserved  
 Specifications are subject to change without prior notice  
 Toll Free: 833.533.7732 | info@lucettaCI.com

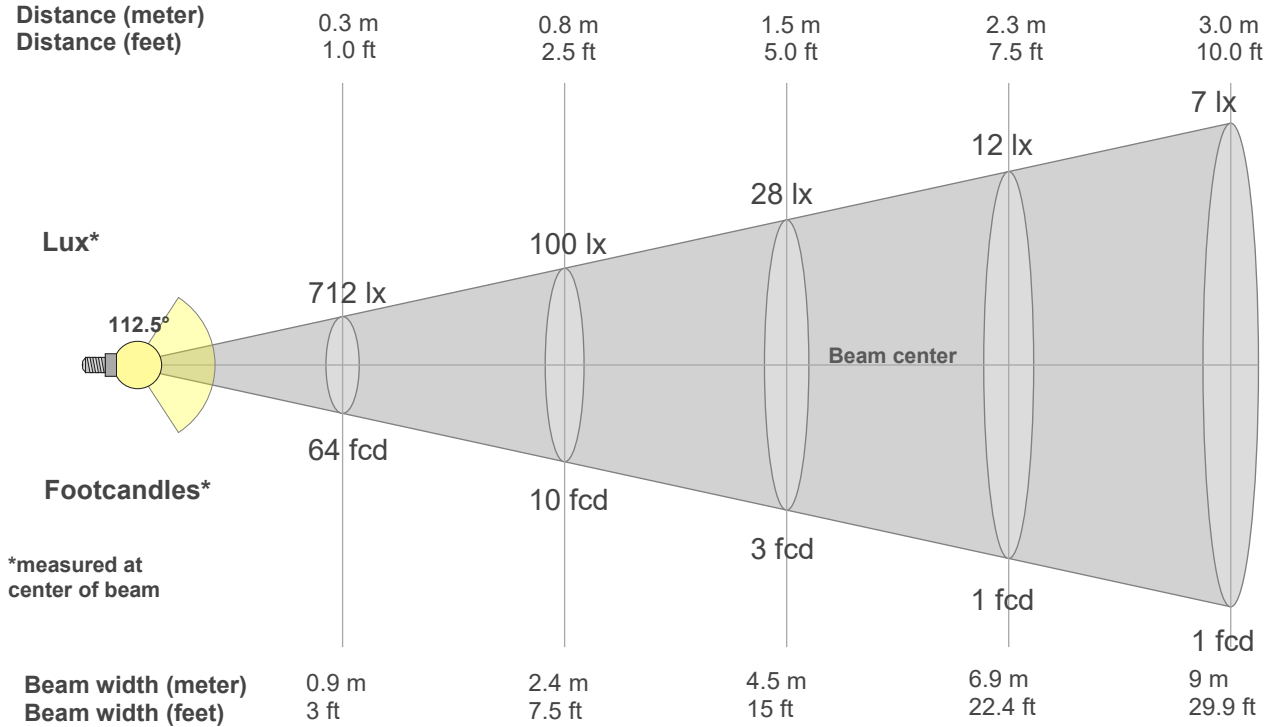
**Rf 91.1**  
Fidelity index Rf

**Rg 99.1**  
Gamut index Rg

Hue Bin	R <sub>f</sub>	Shifts (%)	
		Chroma	Hue
1	91	-5%	0%
2	92	-3%	2%
3	90	-1%	5%
4	94	-1%	2%
5	93	-2%	2%
6	96	1%	0%
7	93	-3%	-1%
8	97	-2%	0%
9	93	-3%	4%
10	86	-2%	8%
11	86	2%	10%
12	90	6%	2%
13	93	3%	-4%
14	88	5%	-8%
15	89	-1%	-6%
16	85	-1%	-12%



**Beam Details**



\*measured at center of beam

**Beam Intensities from 1-20m**

1m	2m	3m	4m	5m	6m	7m	8m	9m	10m	11m	12m	13m	14m	15m	16m	17m	18m	19m	20m
3.3ft	6.6ft	9.8ft	13.1ft	16.4ft	19.7ft	23ft	26.2ft	29.5ft	32.8ft	36.1ft	39.4ft	42.7ft	45.9ft	49.2ft	52.5ft	55.8ft	59.1ft	62.3ft	65.6ft
64lx	16lx	7lx	4lx	3lx	2lx	1lx	1lx	1lx	1lx	1lx	0lx	0lx	0lx	0lx	0lx	0lx	0lx	0lx	0lx
6fcd	1.5fcd	0.7fcd	0.4fcd	0.2fcd	0.2fcd	0.1fcd	0.1fcd	0.1fcd	0.1fcd	0fcd	0fcd	0fcd	0fcd	0fcd	0fcd	0fcd	0fcd	0fcd	0fcd

**Intensities in 0° c-plane**

0°	5°	10°	15°	20°	25°	30°	35°	40°	45°	50°	55°	60°	65°	70°	75°	80°	85°	90°	95°
64.1	63.8	62.9	61.4	59.4	56.8	53.7	50.3	46.5	42.3	37.9	33.3	28.4	23.6	18.8	14.0	9.3	4.9	0.6	0.0
100%	100%	98%	96%	93%	89%	84%	79%	73%	66%	59%	52%	44%	37%	29%	22%	15%	8%	1%	0%

**Intensities in 90° c-plane**

0°	5°	10°	15°	20°	25°	30°	35°	40°	45°	50°	55°	60°	65°	70°	75°	80°	85°	90°	95°
64.1	63.8	63.0	61.5	59.7	57.3	54.4	51.2	47.4	43.3	39.0	34.4	29.6	24.9	19.9	14.8	9.8	5.1	0.8	0.0
100%	99%	98%	96%	93%	89%	85%	80%	74%	68%	61%	54%	46%	39%	31%	23%	15%	8%	1%	0%

**Intensities in 180° c-plane**

0°	5°	10°	15°	20°	25°	30°	35°	40°	45°	50°	55°	60°	65°	70°	75°	80°	85°	90°	95°
64.1	63.8	62.9	61.4	59.4	56.8	53.7	50.3	46.5	42.3	37.9	33.3	28.4	23.6	18.8	14.0	9.3	4.9	0.6	0.0
100%	100%	98%	96%	93%	89%	84%	79%	73%	66%	59%	52%	44%	37%	29%	22%	15%	8%	1%	0%

**Intensities in 270° c-plane**

0°	5°	10°	15°	20°	25°	30°	35°	40°	45°	50°	55°	60°	65°	70°	75°	80°	85°	90°	95°
64.1	63.8	63.0	61.5	59.7	57.3	54.4	51.2	47.4	43.3	39.0	34.4	29.6	24.9	19.9	14.8	9.8	5.1	0.8	0.0
100%	99%	98%	96%	93%	89%	85%	80%	74%	68%	61%	54%	46%	39%	31%	23%	15%	8%	1%	0%

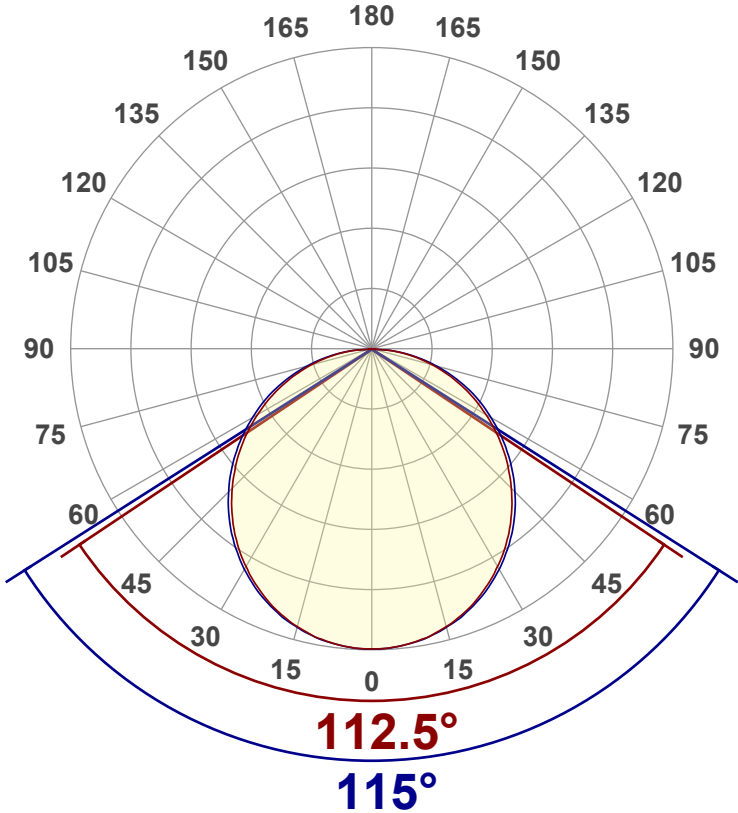
<b>Beam angle 50%</b>	<b>Field angle 10%</b>	<b>Cutoff angle 2,5%</b>	<b>Intensity ratio in 120° cone</b>	<b>Intensity ratio in 90° cone</b>
<b>113.8°</b>	<b>166.8°</b>	<b>178.9°</b>	<b>75.5%</b>	<b>51.2%</b>



Copyright ©2024 Elemental LED, Inc All rights reserved  
 Specifications are subject to change without prior notice  
 Toll Free: 833.533.7732 | info@lucettaCI.com

**Luminous Intensity Diagram**

Unit: 0-100% of peak intensity



**Main Values**

Output (Total Lumen)	192 lm
Lumen Up% / Down%	1.26% / 98.74%
Peak Intensity	64.1 cd
Beam Angle (50%)	113.8°
Beam Angle (90%)	115°
Beam Angle (10%)	112.5°

**Cut-off Angle**

Average 2,5%	178.9°
--------------	--------

**Field Angle**

Average 10%	166.8°
-------------	--------

**Intensity Ratio**

In 120° cone	75.5%
In 90° cone	51.2%

**C000-C180 C090-C270**

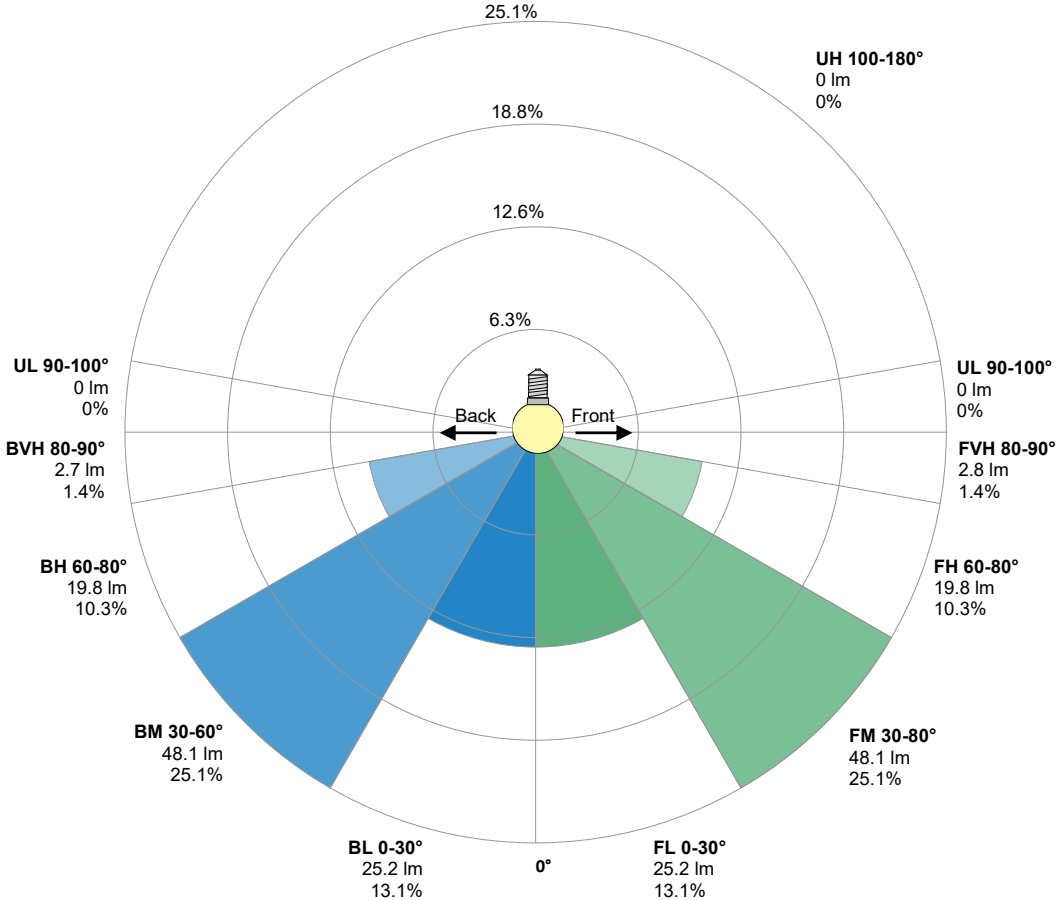
**Zonal Lumen Summary**

0°-10°	10°-20°	20°-30°	30°-40°	40°-50°	50°-60°	60°-70°	70°-80°	80°-90°
6.06 lm	17.4 lm	26.3 lm	31.8 lm	33.1 lm	30.2 lm	23.9 lm	15.2 lm	5.34 lm
90°-100°	100°-110°	110°-120°	120°-130°	130°-140°	140°-150°	150°-160°	160°-170°	170°-180°
1.12 lm	0.268 lm	0.250 lm	0.226 lm	0.195 lm	0.158 lm	0.116 lm	0.071 lm	0.024 lm

LCS Table

BUG rating:	B0 U0 G0	
Forward light	Lumens	Lumens %
Low(0-30):	25.2	13.1%
Medium(30-60):	48.1	25.1%
High(60-80):	19.8	10.3%
Very high(80-90):	2.8	1.4%
Back light		
Low(0-30):	25.2	13.1%
Medium(30-60):	48.1	25.1%
High(60-80):	19.8	10.3%
Very high(80-90):	2.7	1.4%
Uplight		
Low(90-100):	0	0%
High(100-180):	0	0%

LCS Graph



Copyright ©2024 Elemental LED, Inc All rights reserved  
 Specifications are subject to change without prior notice  
 Toll Free: 833.533.7732 | info@lucettaCI.com