

### FARO™ A3 WET LOCATION 24V Linear Lighting System

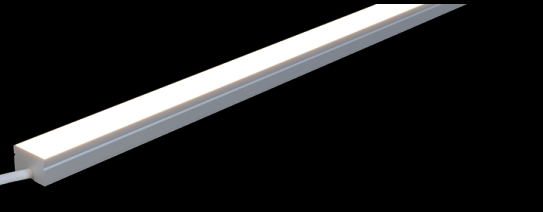
A slim, surface-mounted architectural fixture for minimal presence.

Date \_\_\_\_\_

Project Notes \_\_\_\_\_



FEATURES	MECHANICAL DIAGRAM
<ul style="list-style-type: none"> <li>Low profile for surface mount or millwork</li> <li>Assembled in the USA</li> <li>Multiple output options</li> <li>IP67 (Outdoor / Wet location)</li> <li>Closet rated</li> <li>5 Year Warranty</li> </ul>	



### ORDERING CODES

Order customized fixture													
Options 1-8 & 14 are required to create a fixture.								Options 9 - 13 are not required to create a fixture.					
1	2	3	4	5	6	7	8	9	10	11	12	13	14
Product	Finish	Rating	Performance	W/ft.	CCT	Lens	Fixture Length	Exact / Optimal	Input Wire Length	Input Wire Color, Type & Connection	Output Wire Length	Output Wire Color, Type & Connection	Mounting
LCI													

**1** **PRODUCT**

FARO-A3  
(FARO™ A3 WET LOCATION)

**2** **FINISH**

AL  
(Aluminum)

BL  
(Black)

WH  
(White)

**3** **RATING**

WET  
(Outdoor / Wet Location)

**4** **PERFORMANCE**

95

CRI: 95+  
R9: 90+  
Fidelity: 103  
Gamut: 95

**5** **W/FT.**

1.8

4.6

**6** **CCT**

24  
(2400K)

27  
(2700K)

30  
(3000K)

35  
(3500K)

40  
(4000K)

**7** **LENS**

FR  
(Frosted)

**8** **FIXTURE LENGTH**

\_\_ in.

Fixture length min 6 in., max 96.04 in. (including end caps)

Maximum wire length:  
240 in. 609.6 cm.  
20 ft. 6.09 m.

**9** **EXACT / OPTIMAL**

O  
(Optimal - Default)

E  
(Exact)

**10** **INPUT WIRE LENGTH**

96  
(96 in. - Default)

__ in.	__ cm.
__ ft.	__ m.

**11** **INPUT WIRE COLOR, TYPE & CONNECTION**

COLOR & TYPE	INPUT	CONNECTION
AW (White CL2 - Default)	A (Straight - Default)	1 (Bare Wire - Default)
AB (Black CL2)		

**12** **OUTPUT WIRE LENGTH**

\*blank\*  
(No Wire - Default)

__ in.	__ cm.
__ ft.	__ m.

Maximum wire length:  
240 in. 609.6 cm.  
20 ft. 6.09 m.

**13** **OUTPUT WIRE COLOR, TYPE & CONNECTION**

COLOR & TYPE	OUTPUT	CONNECTION
*blank* (No Wire - Default)	*blank* (No Wire - Default)	*blank* (No Wire - Default)
BW (White CL2)	A (Straight)	1 (Bare Wire)
BB (Black CL2)		

**14** **MOUNTING**

UC  
(U-Clip)

**FARO™ A3 WET LOCATION 24V**  
Linear Lighting System

A slim, surface-mounted architectural fixture for minimal presence.

Date \_\_\_\_\_

Project Notes \_\_\_\_\_



95+ CRI
UL CERTIFIED SAFETY
IP67
24 VDC
NEC RUSSELLBURNETT CLOSET RATED
TITLE 24

**SS Performance**

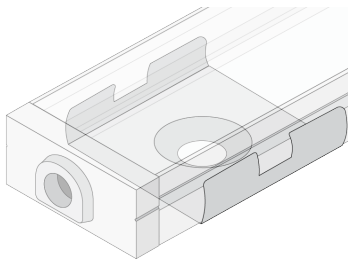
Wattage	CCT	Frosted
1.8 W/ft.	2400K	116
	2700K	124
	3000K	120
	3500K	124
	4000K	128
4.6 W/ft.	2400K	290
	2700K	311
	3000K	299
	3500K	311
	4000K	320

**A3 FIXTURE DIFFUSION**



**MOUNTING OPTIONS**

**U-Clip**



U-Clip Total Dimensions:  
0.64 × 0.64 (H x W)

FARO™ A3 WET LOCATION 24V  
Linear Lighting System

A slim, surface-mounted architectural fixture for minimal presence.

Date \_\_\_\_\_

Project Notes \_\_\_\_\_



RECOMMENDED DRIVERS

SKU	INPUT VOLTAGE / FREQUENCY	OUTPUT VOLTAGE	MAXIMUM LOAD	MINIMUM LOAD	CLASS 2	DIMMABLE	LENGTH	WIDTH	HEIGHT
<b>OMNIDRIVE® X Dimmable Driver</b> Versatile driver for most high-performance dimming on ELV, TRIAC, and 0-10V systems. <div style="float: right; text-align: right;"> <a href="https://www.diodeled.com/custom/download/productFile/filename/omnidrive-x-specification-sheet.pdf">https://www.diodeled.com/custom/download/productFile/filename/omnidrive-x-specification-sheet.pdf</a>                      OMNIDRIVE® X Dimmable Driver Specification Sheet                      Contains:                      • Additional Models • Derating Curves                      • Additional Features • System Diagrams                 </div>									
DI-ODX-24V30W-J	120-277V	24V	30W	No Minimum Load	Yes	Yes	6.5 in.	3.7 in.	1.57 in.
DI-ODX-24V60W-J	120-277V	24V	60W	No Minimum Load	Yes	Yes	7.4 in.	3.7 in.	1.57 in.
DI-ODX-24V96W-J	120-277V	24V	96W	No Minimum Load	Yes	Yes	8.66 in.	3.7 in.	1.57 in.
DI-ODX-24V120W-J	120-277V	24V	120W	No Minimum Load	No	Yes	8.66 in.	3.7 in.	1.57 in.
<b>VLM Series Constant Voltage Driver</b> Compact driver for on/off, PWM dimming, and color-changing applications. <div style="float: right; text-align: right;"> <a href="https://www.diodeled.com/custom/download/productFile/filename/VLM-Specification%20Sheet%20(Driver%20%20J-Box).pdf">https://www.diodeled.com/custom/download/productFile/filename/VLM-Specification%20Sheet%20(Driver%20%20J-Box).pdf</a>                      VLM Series Constant Voltage Driver Specification Sheet                      Contains:                      • Additional Models • Derating Curves                      • Additional Features • System Diagrams                 </div>									
VLM60W-24	120 / 277VAC 47 - 63Hz	24V	60W	No Minimum Load	Yes	PWM	5.1 in.	0.75 in.	0.77 in.
VLM60W-24-LPS3R	120 / 277VAC 47 - 63Hz	24V	60W	No Minimum Load	Yes	PWM	10.79 in.	7.34 in.	2.36 in.
VLM100W-24	120 / 277VAC 47 - 63Hz	24V	100W	No Minimum Load	Yes	PWM	5.38 in.	1 in.	0.77 in.
VLM100W-24-LPS3R	120 / 277VAC 47 - 63Hz	24V	100W	No Minimum Load	Yes	PWM	10.79 in.	7.34 in.	2.36 in.
<b>Nero Advanced Control Drivers</b> Achieve complete dimming with advanced control. <div style="float: right; text-align: right;"> <a href="https://lucettaighting.com/uploads/files/NERO-SPECIFICATION-SHEET.pdf">https://lucettaighting.com/uploads/files/NERO-SPECIFICATION-SHEET.pdf</a>                      Nero Advanced Control Drivers Specification Sheet                      Contains:                      • Additional Models • Derating Curves                      • Additional Features • System Diagrams                 </div>									
VIP-NR-010-24V96	120/277V	24V	96W	None	Yes	Yes	13.50 in.	4.5 in.	2.38 in.
VIP-NR-DALI-24V96	120/277V	24V	96W	None	Yes	Yes	13.50 in.	4.5 in.	2.38 in.
VIP-NR-DMX-24V96	120/277V	24V	96W	None	Yes	Yes	13.50 in.	4.5 in.	2.38 in.

**FARO™ A3 WET LOCATION 24V**  
Linear Lighting System

A slim, surface-mounted architectural fixture for minimal presence.

Date \_\_\_\_\_

Project Notes \_\_\_\_\_



95+ CRI       IP67    24 VDC       TITLE 24

**CERTIFICATIONS**

**Safety**

- UL Listed 2108 Low Voltage Luminaires. Certified for United States and Canada. File # E506975.
- Approved for storage areas of clothes closets per NEC 410.16.A.3 and 410.16.C.5

**Performance**

- Can be used to comply with TITLE 24 Part 6 High Efficacy Lighting LED requirements - JA8-2016-2022-E
- LED chip data measured in accordance to IES LM-80-08.
- Photometric & Colorimetry data measured in accordance to IES LM-79-08, in Elemental LED's Innovation Lab.

**Environment**

- IK11 Rated impact protection in accordance with IEC standards

**Safety / Warnings / Disclosures**

1. Install in accordance with national and local electrical code regulations.
2. This product is intended to be installed and serviced by a qualified, licensed electrician.
3. Only use copper wiring. Use wires rated for at least 176°F (80°C) and certified for use with external connection of electrical equipment.
4. Tape light, attached wire leads, and additional extension cables, connectors, etc., are not rated for in-wall installation unless otherwise noted. Tape light and attached wire leads are field-cutable.
5. Ensure applicable wire is installed between driver, fixture, and any controls in-between. When choosing wire, factor in voltage drop, amperage rating, and type (in-wall rated, wet location rated, etc.). Inadequate wire installation could overheat wires, and cause fire.
6. Do not install in environment where LED chips are exposed to direct sunlight as damage to the phosphor will occur.
7. Do not install in environment where excessive heat may exist (ex. close proximity to fireplace, etc.) See Ambient Temperature ratings
8. Do not modify product beyond instructions or warranty will be void.
9. Actual color may vary from what is pictured on this sheet and other print materials due to the limitations of photographic processes.
10. We reserve the right to modify and improve the design of our fixtures without prior notice. We cannot guarantee to match existing installed fixtures for subsequent orders or replacements in regards to product appearance, CCT, or lumen output.

- Lumen value measured in accordance to IES LM-80-08. LED chips have a luminous flux range with a tolerance of +/- 5%.
- Each maximum run requires a dedicated power feed from the driver. Do not extend beyond the recommended maximum run length. Max run may exceed Class 2 limit. Actual wattage may differ from calculated wattage due to voltage drop across run.
- Do not install product in an environment outside the listed ambient temperature. Exceeding the maximum ambient temperature may damage LED chips, reduce the total lamp life, lumen output, and/or adversely impact color consistency.
- Actual efficacy value is dependent to specified LED driver (power supply). An estimated efficacy value can be calculated as follows: Lumen value divided by average power consumption per foot.
- Operating temperature is measured according to the minimum and maximum ambient temperature environment.

**WARRANTY**

**Limited Warranty**

- 5 Year limited warranty

This warranty does not include the additional accessories referenced in this specification sheet. Complete warranty details for fixtures and additional accessories are available at [www.diodedeled.com/limited-warranty/](http://www.diodedeled.com/limited-warranty/) within the Policies section. For warranty related questions please contact product support.

**Consumer's Acknowledgment**

Elemental LED, Inc. stands behind its products when they are used properly and according to our specifications. By purchasing our products, the purchaser agrees and acknowledges that lighting design, configuration and installation is a complex process, wherein seemingly minor factors or changes in layout and infield adjustments can have a significant impact on an entire system. Choosing the correct components is essential. Elemental LED is able to work with the original purchaser to make an appropriate product selection to the extent of the limited information that the customer can provide, but it is virtually impossible for Elemental LED to design a system that foresees every unknown factor. For this reason, this Warranty does not cover problems caused by improper design, configuration or installation issues. Any statement from a Elemental LED employee or agent regarding a customer's bill of goods and/or purchase order is NOT an acknowledgment that the products purchased are designed and configured correctly. The purchase agrees and acknowledges that it is the customer's responsibility to adhere strictly to all information contained in the Product Specification Sheets.

There is often more than one way to design, configure and layout an LED lighting application properly to achieve the same lighting effect. Elemental LED strongly recommends that licensed professionals be used in the design and installation of lighting systems that include Elemental LED products. The specifications include important information that a designer and installer should carefully review and strictly follow. Qualified designers and certified and/or licensed installers, with access to the final installation environment, customer goals, and Elemental LED product specifications can make the requisite decisions appropriate for a successful finished lighting application.